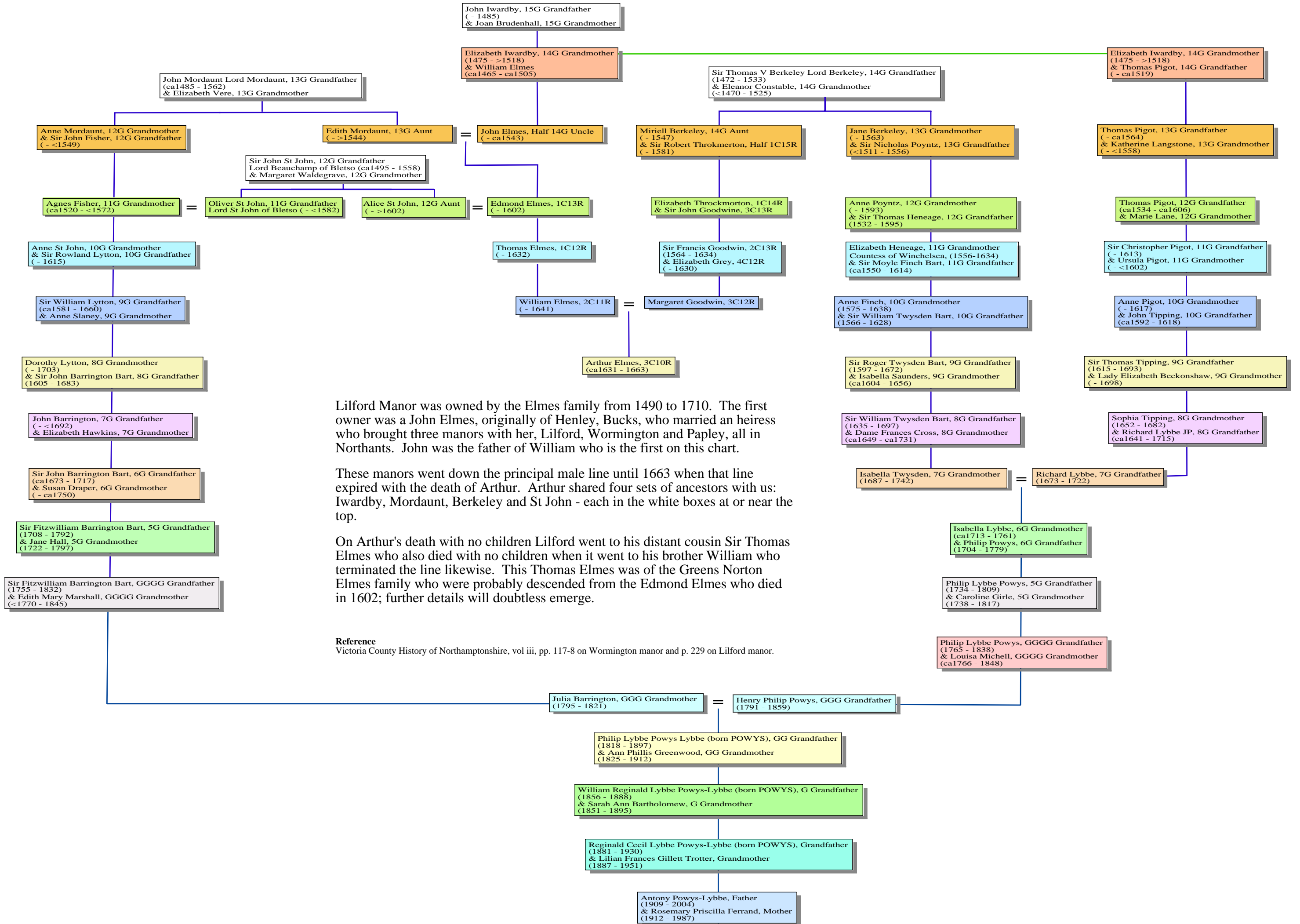


P-L Ancestors and the Ancient Owners of Lilford



Lilford Manor was owned by the Elmes family from 1490 to 1710. The first owner was a John Elmes, originally of Henley, Bucks, who married an heiress who brought three manors with her, Lilford, Wormington and Papley, all in Northants. John was the father of William who is the first on this chart.

These manors went down the principal male line until 1663 when that line expired with the death of Arthur. Arthur shared four sets of ancestors with us: Iwardby, Mordaunt, Berkeley and St John - each in the white boxes at or near the top.

On Arthur's death with no children Lilford went to his distant cousin Sir Thomas Elmes who also died with no children when it went to his brother William who terminated the line likewise. This Thomas Elmes was of the Greens Norton Elmes family who were probably descended from the Edmond Elmes who died in 1602; further details will doubtless emerge.

Reference
Victoria County History of Northamptonshire, vol iii, pp. 117-8 on Wormington manor and p. 229 on Lilford manor.